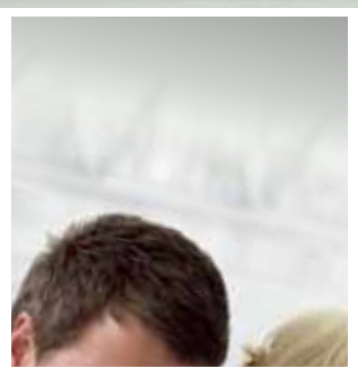


The Marcoola

SERIES BY CORAL HOMES

SINGLE STOREY RANGE



Coral Homes
BUILT ON TRUST SINCE 1990

Welcome to cleverliving BY CORAL HOMES

Coral Homes designs Clever Living homes around the needs of each and every family member, to create spacious, easy living spaces everyone will love to live in.

By creating chill out, get together and free flow areas throughout our family homes, we encourage growing families to grow closer.

We call it Clever Living – we're confident your family will want to call it home.



The Marcoola Series – another great example of Coral Homes' unique style of Clever Living.

There's nothing cooler than a Marcoola family home from Coral Homes.

Featuring true resort-style indoor/outdoor integration this versatile family home makes living a relaxed and comfortable lifestyle so easy!

From the Marcoola 26 right through to the large Marcoola 32 you'll experience open plan living at its best.

Come together in the heart of the home where a chef inspired kitchen overlooks a spacious, light filled family and dining space. Then take a few steps outside to what many Marcoola owners call their favourite spot, the "outdoor room".

Enjoy cool breezes here before heading back inside to the media/lounge in the Marcoola 30 and 32 to watch a great movie in comfort. Then it's off to the homes' secluded master bedroom with ensuite and walk-in robe, or one of the homes' other three bedrooms where the kids can enjoy easy access to their very own activity space.

Come home to resort style living Coral Homes style compliments of the Marcoola Series – family friendly, Clever Living spaces you'll love to live in!

Marcoola 26

- ✓ Large open plan kitchen, family and dining space to bring the family together
- ✓ Modern galley style kitchen with walk in pantry overlooks the main indoor and outdoor living areas of the home
- ✓ Separate activity room for the kids to make some noise
- ✓ Outdoor living area provides the perfect space for the whole family to take advantage of the great outdoors
- ✓ Master bedroom complete with luxurious ensuite and walk in robe provides the perfect retreat for parents



LIVING AREAS

- Family: 5100 x 6170mm
- Activity: 2800 x 4200mm

BEDROOMS

- Master: 3960 x 4550mm
- Bed 2: 3000 x 3200mm
- Bed 3: 3100 x 3000mm
- Bed 4: 3100 x 3000mm

OUTDOOR

- Outdoor Living: 4800 x 4470mm

FLOOR AREA

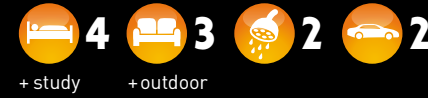
- Total: 246.3m² [26.5sq]

EXTERIOR DIMENSIONS

- Length: 21400mm
- Width: 13700mm

Marcoola 30

- ✓ Large open plan kitchen, family and dining space to bring the family together
- ✓ Modern galley style kitchen with walk in pantry overlooks the main indoor and outdoor living areas of the home
- ✓ Separate media/lounge room for parents to enjoy some quiet time alone or for the whole family to enjoy a movie together
- ✓ Separate activity room for the kids to make some noise
- ✓ Outdoor living area provides the perfect space for the whole family to take advantage of the great outdoors
- ✓ Master bedroom complete with luxurious ensuite and walk in robe provides the perfect retreat for parents
- ✓ Study situated away from distractions provides the option of an additional bedroom



LIVING AREAS

- Family: 5360 x 4350mm
- Media/Lounge: 5100 x 3900mm
- Activity: 2800 x 4250mm

BEDROOMS

- Master: 4250 x 3500mm
- Bed 2: 3000 x 3550mm
- Bed 3: 3000 x 3050mm
- Bed 4: 3000 x 3050mm

OUTDOOR

- Outdoor Living: 5330 x 3850mm

FLOOR AREA

- Total: 274.7m² [29.6sq]

EXTERIOR DIMENSIONS

- Length: 21300mm
- Width: 15210mm

Marcoola 32

- ✓ Large open plan kitchen, family and dining space to bring the family together
- ✓ Modern galley style kitchen with walk in pantry overlooks the main indoor and outdoor living areas of the home
- ✓ Separate media/lounge room for parents to enjoy some quiet time alone or for the whole family to enjoy a movie together
- ✓ Separate activity room for the kids to make some noise
- ✓ Oversized outdoor living area provides the perfect space for the whole family to take advantage of the great outdoors
- ✓ Master bedroom complete with luxurious ensuite and walk in robe provides the perfect retreat for parents
- ✓ Study situated away from distractions provides the option of an additional bedroom



LIVING AREAS

- Family: 5760 x 4500mm
- Media/Lounge: 5300 x 4200mm
- Activity: 3000 x 4250mm

BEDROOMS

- Master: 4250 x 3700mm
- Bed 2: 3000 x 3550mm
- Bed 3: 3000 x 3050mm
- Bed 4: 3000 x 3050mm

OUTDOOR

- Outdoor Living: 8800 x 4650mm

FLOOR AREA

- Total: 300.0m² [32.3sq]

EXTERIOR DIMENSIONS

- Length: 21900mm
- Width: 15510mm



- A | THE "BEACHMERE" FACADE
- B | THE "HASTINGS" FACADE
- C | THE "HASTINGS" PORTICO
- D | THE "TRINITY" FACADE
- FRONT COVER | THE "COOLOOLA" FACADE



Coral Homes' facade options – beauty, personality and brains, no wonder they're so popular!

Ok so you've planned the interior to perfection – now it's time to look outside. Choosing a facade is an important decision – you not only want your home's exterior to look beautiful, you also want it to reflect your personality, and of course you want it to maintain its appeal and grow in value. That's why Coral Homes have a range of facades options that let you "personalise" your home's exterior and enhance its all important street appeal. Make a great impression with a facade from Coral Homes' amazing range and ensure the long term appeal and value of your investment. Coral Homes' facades – the perfect way to put your stamp on your new family home.





www.coralhomes.com.au

© Coral Homes Pty Ltd. The copyright in these floor plans and facades is owned by or licensed to Coral Homes Pty Ltd and may not be reproduced, copied or dealt with in any manner which infringes the exclusive rights of Coral Homes Pty Ltd as prescribed by the Copyright Act 1968, without the express written authorisation of Coral Homes. Photos, floor plans and facade images are illustrative only and may show non-standard inclusions. Floor plans are based on Eclipse inclusions and are for illustrative purposes only. QBSA 50792/1014053 & OFT NSW 62084c

Coral Homes
BUILT ON TRUST SINCE 1990