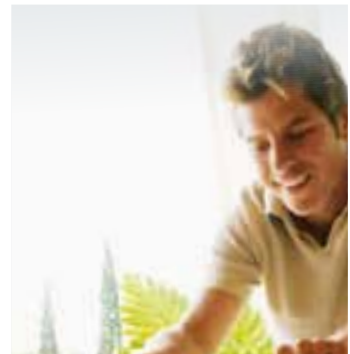


# The Casuarina

SERIES BY CORAL HOMES

SINGLE STOREY RANGE



**Coral Homes**  
BUILT ON TRUST SINCE 1990

# Welcome to cleverliving BY CORAL HOMES

Coral Homes designs Clever Living homes around the needs of each and every family member, to create spacious, easy living spaces everyone will love to live in.

By creating chill out, get together and free flow areas throughout our family homes, we encourage growing families to grow closer.

We call it Clever Living – we're confident your family will want to call it home.



## The Casuarina Series – another great example of Coral Homes' unique style of Clever Living.

There's no place like a home from the Casuarina Series - an innovative and versatile range of family homes guaranteed to make anyone walking through its doors feel welcome and relaxed.

Walk on in to the Casuarina's spacious heart where easy conversations flow from the kitchen to an open plan family and dining space.

Explore further and you'll find spaces for everyone - from your private master bedroom with luxurious ensuite and walk in robe, to the kids' bedrooms and separate activity room, right through to the home's media/lounge room and outdoor living area, the Casuarina really is the kind of place

everyone in the family will love to call home. Coral Homes' flexibility also means you can change the size, position and configuration of areas like the kitchen, bathrooms and other rooms so at the end of the day you have a home that perfectly suits each and every member of your family. You can also upgrade the street appeal of your home with one of Coral Homes' amazing new facades – it's all about building the perfect home for your family, inside and out!

Take a closer look at the Casuarina Series and plan to build a spacious, quality, value for money home everyone in your family will love to live in!

# Casuarina 30

- ✓ Large open plan kitchen, family and dining space to bring the family together
- ✓ Modern galley style kitchen with walk in pantry overlooks the main indoor and outdoor living areas
- ✓ Separate media/lounge room for family members to enjoy some quiet time alone or for the whole family to enjoy a movie together
- ✓ Separate activity room for the kids to make some noise
- ✓ Generous outdoor living area provides the perfect space for the whole family to take advantage of the great outdoors
- ✓ Master bedroom complete with luxurious ensuite and walk in robe provides the perfect retreat for parents
- ✓ Study situated away from distractions provides the option of a fifth bedroom

 5
  3
  2
  2  
 inc study + outdoor

## LIVING AREAS

- Family/Dining: 7000 x 6370mm
- Media/Lounge: 4600 x 3600mm
- Activity: 4120 x 3210mm

## BEDROOMS

- Master: 4000 x 4670mm
- Bed 2: 3000 x 3210mm
- Bed 3: 3000 x 3000mm
- Bed 4: 3000 x 3000mm
- Bed 5/Study: 3000 x 3000mm

## OUTDOOR

- Outdoor Living: 4020 x 5210mm

## FLOOR AREA

- Total: 278.58m<sup>2</sup> [30.0sq]


## EXTERIOR DIMENSIONS

- Length: 23080mm
- Width: 15470mm



# Casuarina 32

- ✓ Large open plan kitchen, family and dining space to bring the family together
- ✓ Modern galley style kitchen with walk in pantry overlooks the main indoor and outdoor living areas
- ✓ Separate media/lounge room for family members to enjoy some quiet time alone or for the whole family to enjoy a movie together
- ✓ Large rumpus room with easy access to outdoors provides a separate entertaining space
- ✓ Separate activity room for the kids to make some noise
- ✓ Generous outdoor living area provides the perfect space for the whole family to take advantage of the great outdoors
- ✓ Master bedroom complete with luxurious ensuite and walk in robe provides the perfect retreat for parents
- ✓ Study situated away from distractions provides the option of a fifth bedroom

 5
  4
  2
  2  
 inc study + outdoor

## LIVING AREAS

- Family/Dining: 7440 x 6670mm
- Media/Lounge: 4600 x 3900mm
- Rumpus: 4700 x 4000mm
- Activity: 4510 x 3400mm

## BEDROOMS

- Master: 3800 x 4670mm
- Bed 2: 3000 x 3000mm
- Bed 3: 3000 x 3200mm
- Bed 4: 3000 x 3200mm
- Bed 5/Study: 3000 x 3000mm

## OUTDOOR

- Outdoor Living: 4770 x 4720mm

## FLOOR AREA

- Total: 303.24m<sup>2</sup> [32.6sq]





## EXTERIOR DIMENSIONS

- Length: 24990mm
- Width: 15770mm



# Casuarina 34

- ✓ Very large open plan kitchen, family and dining space to bring the family together
- ✓ Amazing galley style kitchen complete with walk in butlers pantry forms the centerpiece of the home and overlooks main indoor and outdoor living areas
- ✓ Separate media/lounge room for family members to enjoy some quiet time alone or for the whole family to enjoy a movie together
- ✓ Separate activity room for the kids to make noise
- ✓ Generous outdoor living area provides the perfect space for the whole family to take advantage of the great outdoors
- ✓ Master bedroom complete with luxurious ensuite and walk in robe provides the perfect retreat for parents
- ✓ Study situated away from distractions provides the option of a sixth bedroom

 6
  3
  2
  2  
 inc study + outdoor

## LIVING AREAS

- Family/Dining: 9340 x 6670mm
- Media/Lounge: 4600 x 3900mm
- Activity: 3910 x 3000mm

## BEDROOMS

- Master: 4000 x 4670mm
- Bed 2: 3000 x 3000mm
- Bed 3: 3000 x 3000mm
- Bed 4: 3000 x 3000mm
- Bed 5: 3000 x 3000mm
- Bed 6/Study: 3000 x 3000mm

## OUTDOOR

- Outdoor Living: 4150 x 5720mm

## FLOOR AREA

- Total: 314.05m<sup>2</sup> [33.8sq]

## EXTERIOR DIMENSIONS

- Length: 25190mm
- Width: 15770mm





- A | THE "TRINITY" FACADE
- B | THE "HASTINGS" FACADE
- C | THE "HASTINGS" PORTICO
- D | THE "COOLOOLA" FACADE
- E | THE "HALIFAX" FACADE
- FRONT COVER | THE "PALAZZO" FACADE

**Coral Homes' facade options – beauty, personality and brains, no wonder they're so popular!**

Ok so you've planned the interior to perfection – now it's time to look outside.

Choosing a facade is an important decision – you not only want your home's exterior to look beautiful, you also want it to reflect your personality, and of course you want it to maintain its appeal and grow in value.

That's why Coral Homes have developed a range of facades options that let you "personalise" your home's exterior and enhance its all important street appeal.

Make a great impression with a facade from Coral Homes' amazing new range and ensure the long term appeal and value of your investment.

Coral Homes' facades – the perfect way to put your stamp on your new family home.



[www.coralhomes.com.au](http://www.coralhomes.com.au)

© Coral Homes Pty Ltd. The copyright in these floor plans and facades is owned by or licensed to Coral Homes Pty Ltd and may not be reproduced, copied or dealt with in any manner which infringes the exclusive rights of Coral Homes Pty Ltd as prescribed by the Copyright Act 1968, without the express written authorisation of Coral Homes. Photos, floor plans and facade images are illustrative only and may show non-standard inclusions. Floor plans are based on Eclipse inclusions and are for illustrative purposes only. QBSA 50792/1014053 & OFT NSW 62084c



**Coral Homes**  
BUILT ON TRUST SINCE 1990