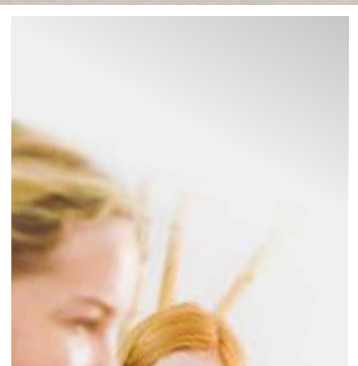


# The Miami

BY CORAL HOMES

TWO STOREY RANGE



**Coral Homes**  
BUILT ON TRUST SINCE 1990

# Welcome to cleverliving BY CORAL HOMES

Coral Homes designs Clever Living homes around the needs of each and every family member, to create spacious, easy living spaces everyone will love to live in.

By creating chill out, get together and free flow areas throughout our family homes, we encourage growing families to grow closer.

We call it Clever Living – we're confident your family will want to call it home.



## The Miami – another great example of Coral Homes' unique style of Clever Living.

If spacious, low maintenance, relaxed living is your vice, the Miami is your kind of place!

The Miami's ground floor features an open plan family and dining area, separate lounge and games rooms and a thru-flow outdoor living area. Pop upstairs and you'll find four spacious bedrooms including an indulgent master bedroom with a luxurious ensuite, two bathrooms, and a separate retreat where you or the kids can escape to chill out for a while.

As with every Clever Living Coral Home

the Miami can be "customised" to suit your family's specific likes and needs.

Coral Homes' flexibility means you can change the size, position and configuration of areas like the kitchen, bathrooms and other rooms so at the end of the day you have a home that perfectly suits each and every member of your family. You can also upgrade the street appeal of your home with one of Coral Homes' amazing new facades – it's your choice, because at Coral Homes we're not entirely happy with your new home until you are!

# Miami 40

- ✓ Open plan kitchen, family and dining space to bring the family together
- ✓ Multipurpose light filled lounge area for relaxing with family or entertaining guests
- ✓ Separate games room for the kids to make noise with easy access to outdoors
- ✓ Amazing outdoor living area seamlessly connected with internal living spaces
- ✓ Upstairs retreat for family members to escape the noise
- ✓ A haven for parents – upstairs master bedroom with ensuite and separate WC
- ✓ Study provides option for downstairs guest room
- ✓ Under staircase store room accessed from garage for more storage space

 **5**
 **4**
 **3.5**
 **2**  
 inc. study + outdoor

## LIVING AREAS

- Family/Dining: 7700 x 5170mm
- Lounge: 3920 x 4200mm
- Games: 4000 x 3850mm
- Retreat: 4450 x 3850mm

## BEDROOMS

- Master: 3900 x 5170mm
- Bed 2: 3200 x 3880mm
- Bed 3: 3400 x 3600mm
- Bed 4: 3500 x 3250mm
- Study/Bed 5: 3000 x 3050mm

## OUTDOOR

- Outdoor Living: 5000 x 4000mm

## TOTAL AREAS

- Lower Floor: 209.29m<sup>2</sup> (22.52sq)
- Upper Floor: 165.09m<sup>2</sup> (17.76sq)
- Total: 374.38m<sup>2</sup> (40.3sq)

## EXTERIOR DIMENSIONS

- Length: 20850mm
- Width: 13550mm





**Coral Homes facade options – beauty, personality and brains, no wonder they’re so popular!**

Ok so you’ve planned the interior to perfection – now it’s time to look outside.

Choosing a facade is an important decision – you not only want your homes’ exterior to look beautiful, you also want to reflect your personality, and of course you want it to maintain its appeal and grow in value.

That’s why Coral Homes have developed a range of facades options that let you “personalise” your homes’ exterior and enhance its all important street appeal.

Make a great impression with a facade from Coral Homes’ amazing new range and ensure the long term appeal and value of your investment.

Coral Homes’ facades – the perfect way to put your stamp on your new family home.



**Facade Options**

**A | THE “BRIGHTON” FACADE**

**B | THE “LAGUNA” FACADE**

**FRONT COVER | THE “SARINA” FACADE**





[www.coralhomes.com.au](http://www.coralhomes.com.au)

© Coral Homes Pty Ltd. The copyright in these floor plans and facades is owned by or licensed to Coral Homes Pty Ltd and may not be reproduced, copied or dealt with in any manner which infringes the exclusive rights of Coral Homes Pty Ltd as prescribed by the Copyright Act 1968, without the express written authorisation of Coral Homes. Photos, floor plans and facade images are illustrative only and may show non-standard inclusions. Floor plans are based on Eclipse inclusions and are for illustrative purposes only. QBSA 50792/1014053 & OFT NSW 62084c

**Coral Homes**  
BUILT ON TRUST SINCE 1990