

# The Noosa

S E R I E S



Skillion facade shown

**SINGLE STOREY RANGE**



# Welcome to cleverliving BY CORAL HOMES

Families love Coral Homes because we design our homes around the needs of each and every family member.

By creating chill out, get together and free flow areas throughout our family homes, we encourage growing families to grow closer.

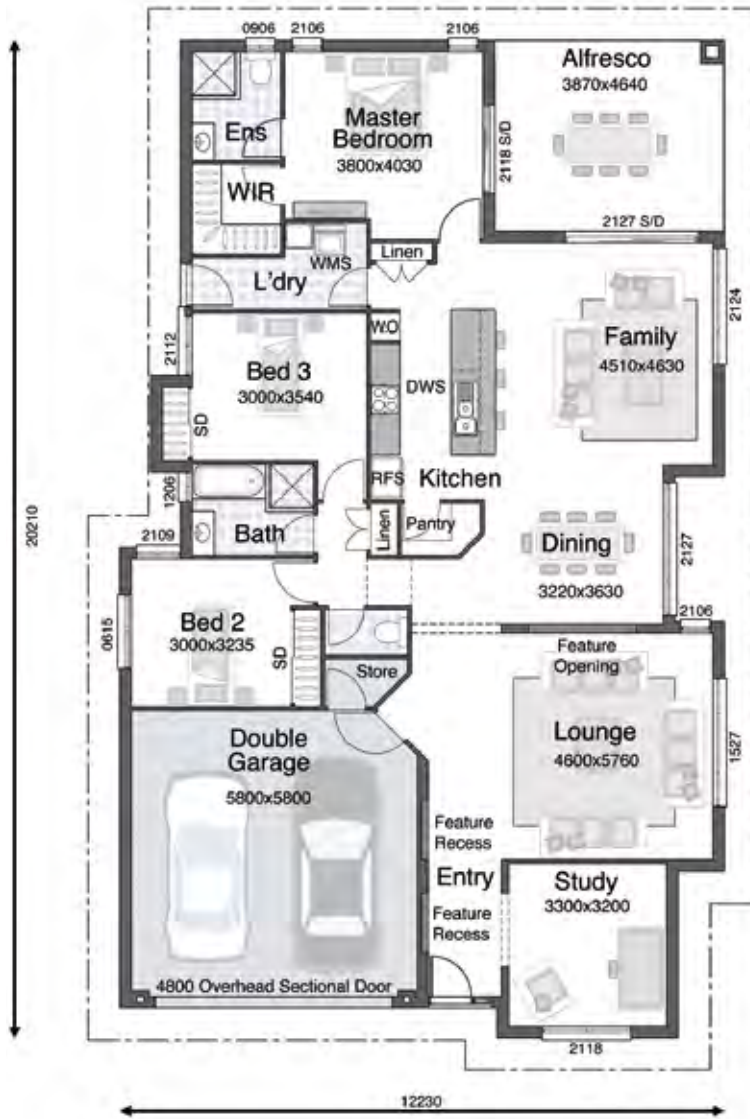
We call it Clever Living – we're confident your family will want to call it home.



**The Noosa Series –  
another great example  
of Coral Homes' unique  
style of Clever Living.**

# Noosa 228

House size:  
227.9 sqm  
(24.5 sq)



- Modern galley style kitchen overlooking main family areas of the home
- Indoor/outdoor living with family area leading outside to alfresco area
- Multipurpose light filled lounge area for relaxing with family or entertaining guests
- Open plan kitchen, family and dining area to bring the family together
- A haven for parents – master bedroom at the rear of the home for privacy
- Study positioned away from distractions provides the option of an extra bedroom



With features like a centrally located easy view kitchen, open plan family and dining area, separate lounge room, alfresco area and even a separate rumpus room in the larger plan, the Noosa makes everyone who walks through its door feel right at home.

Clever Living is easy living, that's why every Coral Homes plan is designed to meet the needs of every family member.

No one ever misses out, with spaces dedicated to time together and quiet time alone. And because every family is unique, Coral Homes offers an amazing range of inclusions upgrades designed to help you put your stamp on your new home.

It's all part of the Coral Homes Clever Living approach – an approach that results in spacious, quality, value for

money homes around the needs of the whole family.

Families love Coral Homes – take a closer look at the Noosa Series of family homes and we're confident you'll see why.

*The Noosa Series consists of three designs, 223.0m<sup>2</sup> (24.0sq) to 279.0m<sup>2</sup> (30.0sq) in size.*



# Noosa 223

House size:  
223.0 sqm  
(24.0 sq)



- Modern galley style kitchen overlooking main family areas of the home
- Indoor/outdoor living with family area leading outside to alfresco area
- Multipurpose light filled lounge area for relaxing with family or entertaining guests
- Open plan kitchen, family and dining area to bring the family together
- A haven for parents – master bedroom at the rear of the home for privacy
- Study positioned away from distractions provides the option of an extra bedroom
- Central work station for the kids to do homework or access the internet

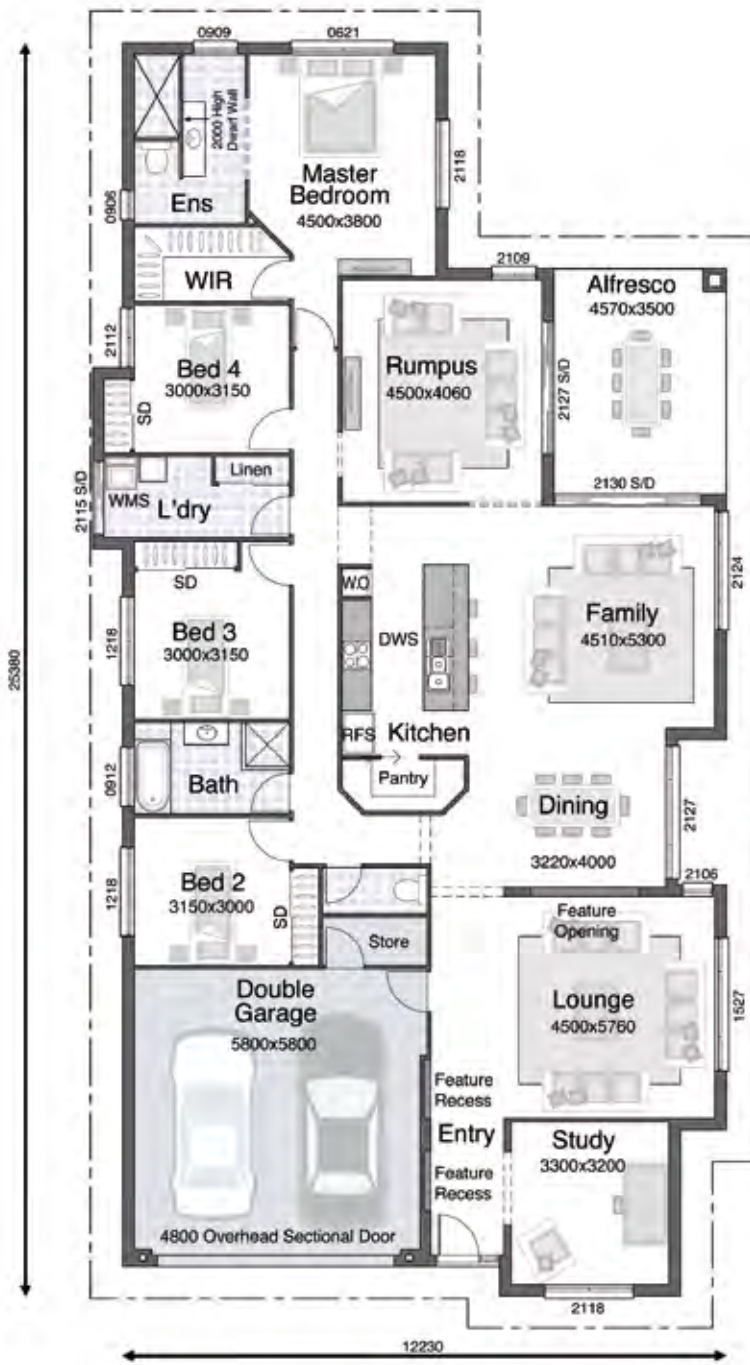


# The Noosa Series



## Noosa 279

House size:  
279.0 sqm  
(30.0 sq)



- Modern galley style kitchen overlooking main family areas of the home
- Indoor/outdoor living with family area leading outside to alfresco area
- Multipurpose light filled lounge area for relaxing with family or entertaining guests
- Open plan kitchen, family and dining area to bring the family together
- Rumpus room provides a fun zone for the family or separate play area for the kids
- A haven for parents – master bedroom at the rear of the home for privacy
- Study positioned away from distractions provides the option of an extra bedroom



# The Noosa

S E R I E S

[www.coralhomes.com.au](http://www.coralhomes.com.au)



[www.coralhomes.com.au](http://www.coralhomes.com.au)



© Coral Homes Pty Ltd. The copyright in these floor plans is owned by or licensed to Coral Homes Pty Ltd. The floor plans may not be reproduced, copied or dealt with in any manner which infringes the exclusive rights of Coral Homes Pty Ltd as prescribed by the Copyright Act 1968, without the express written authorisation of Coral Homes Pty Ltd. Photos are illustrative only and may show non-standard inclusions. Floor plans shown are based on standard inclusions. QBSA No. 50792/1014053 & OFT NSW No. 62084c.