



The Bahama Series



Classic



Plantation

Facade Options



Georgian



Regal

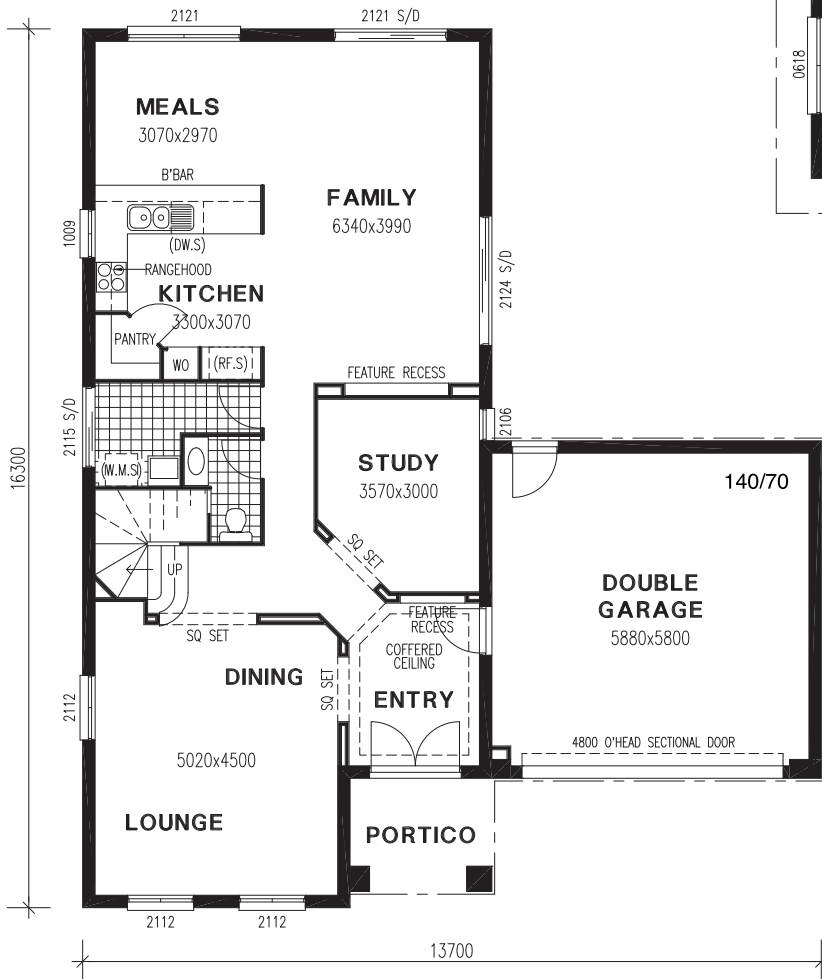


Bahama 279

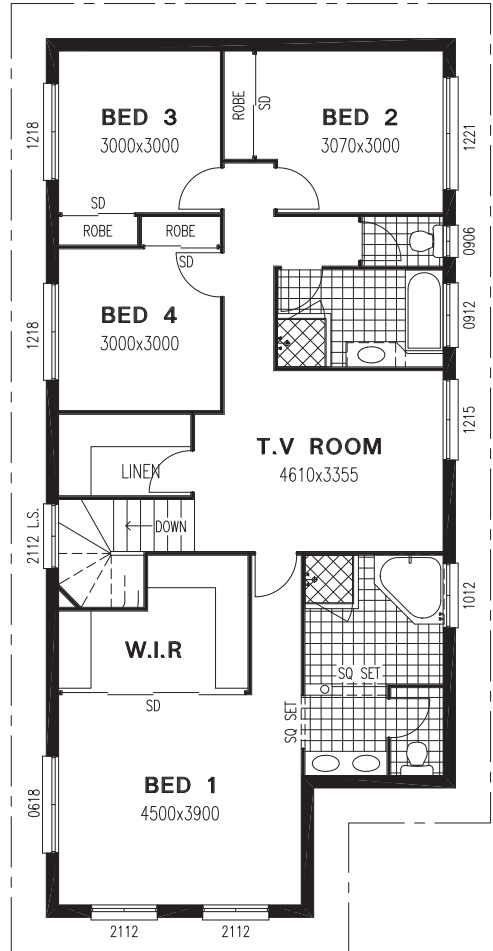
by Coral Homes

278.5 sqm (30.0 sq)

LOWER FLOOR PLAN



UPPER FLOOR PLAN



Coral Homes

Built on trust

© Coral Homes Pty Ltd 2008

The Copyright in this floor plan is owned by or licenced to Coral Homes Pty Ltd. This floor plan may not be reproduced, copied or dealt with in any manner which infringes the exclusive rights of Coral Homes Pty Ltd as prescribed by the Copyright Act 1968, without the express written authorisation of Coral Homes Pty Ltd.

Window changes and/or the addition of a fan/s may occur to the house design in order for it to comply with Energy Efficiency regulations in Qld only.

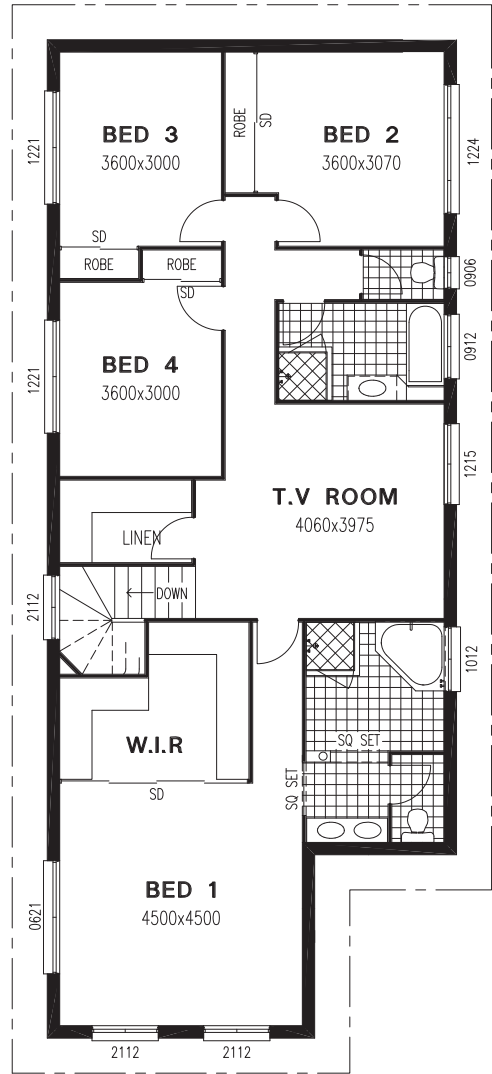


Bahama 307

by Coral Homes

307.0 sqm (33.0 sq)

UPPER FLOOR PLAN



LOWER FLOOR PLAN



Coral Homes

Built on trust

© Coral Homes Pty Ltd 2008

The Copyright in this floor plan is owned by or licenced to Coral Homes Pty Ltd. This floor plan may not be reproduced, copied or dealt with in any manner which infringes the exclusive rights of Coral Homes Pty Ltd as prescribed by the Copyright Act 1968, without the express written authorisation of Coral Homes Pty Ltd.

Window changes and/or the addition of a fan/s may occur to the house design in order for it to comply with Energy Efficiency regulations in Qld only.

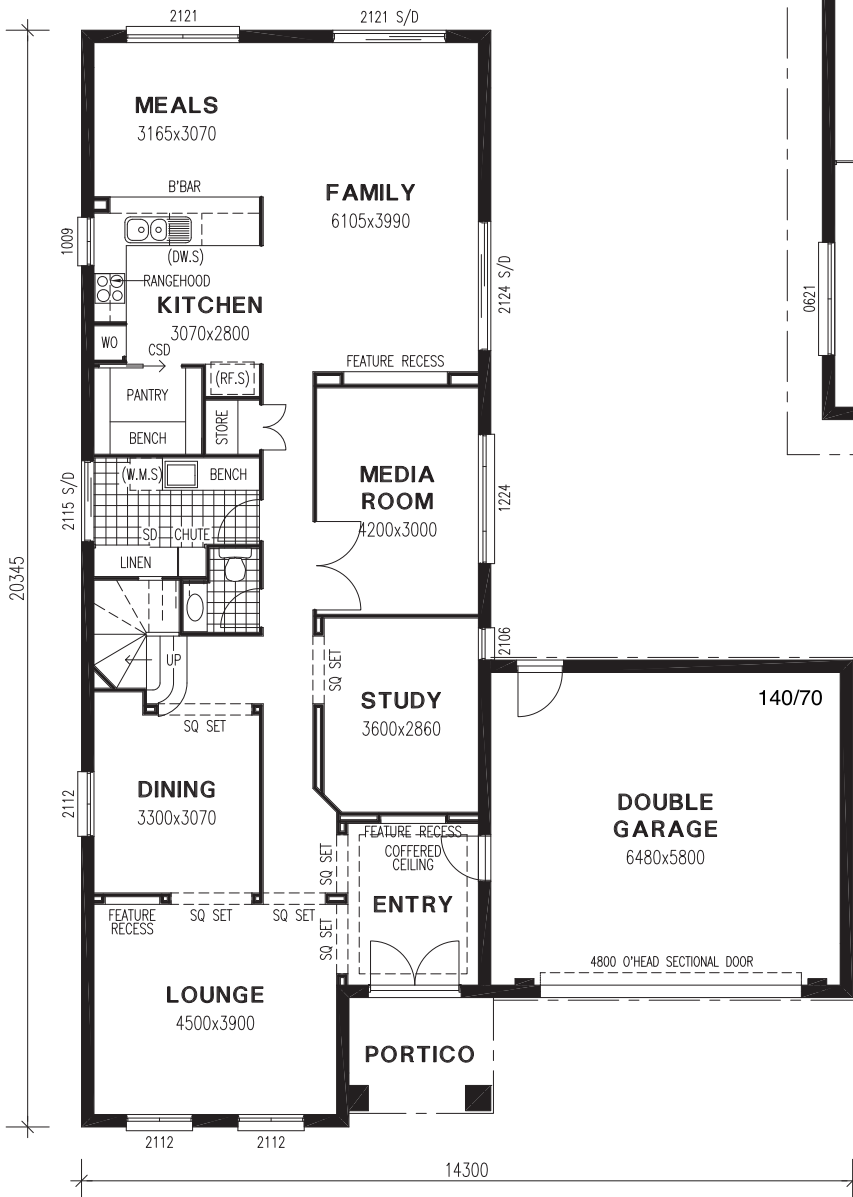


Bahama 344

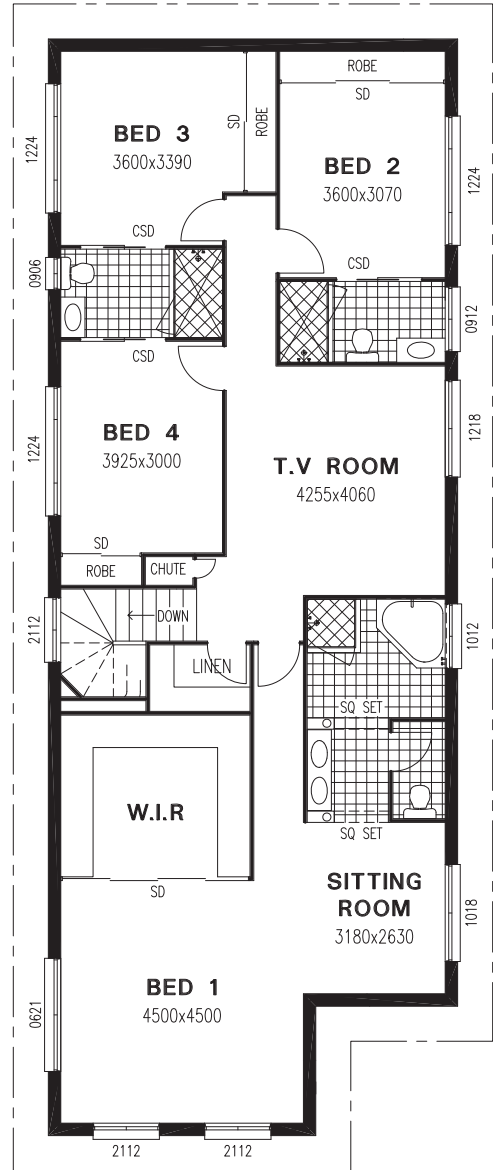
by Coral Homes

343.7 sqm (37.0 sq)

LOWER FLOOR PLAN



UPPER FLOOR PLAN



Coral Homes

Built on trust

© Coral Homes Pty Ltd 2008

The Copyright in this floor plan is owned by or licenced to Coral Homes Pty Ltd. This floor plan may not be reproduced, copied or dealt with in any manner which infringes the exclusive rights of Coral Homes Pty Ltd as prescribed by the Copyright Act 1968, without the express written authorisation of Coral Homes Pty Ltd.

Window changes and/or the addition of a fan/s may occur to the house design in order for it to comply with Energy Efficiency regulations in Qld only.

Head Office: (07) 5585 2555

www.coralhomes.com.au